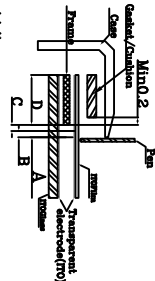


Structure and Area definition

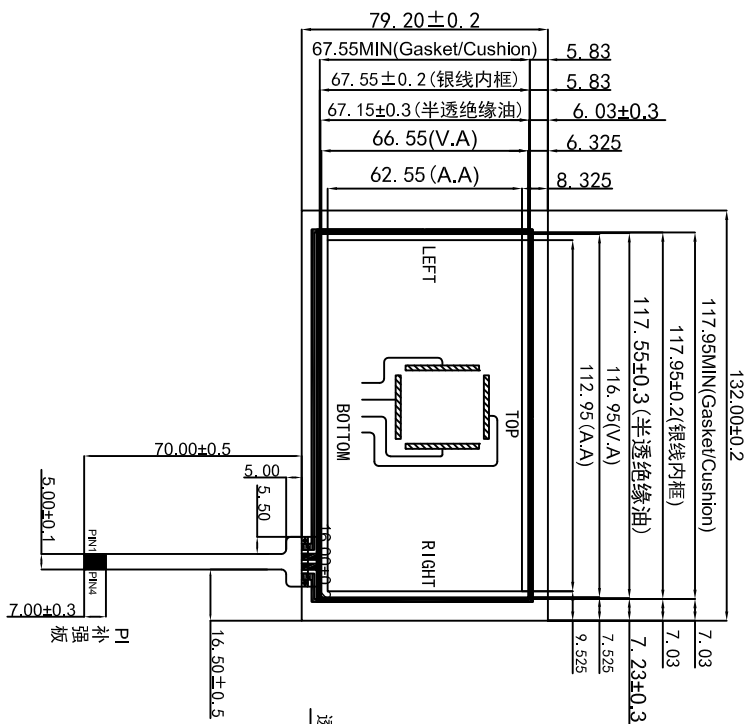


Active area
The area which guarantees a touch panel operation without forming characteristic lines generated by the rubbing process, is defined as the active area. (Stripping durability, (A)pen adding durability, B)operation loss, guaranteed area. Operation loss is the area where the touch panel operation and its function when the area is pressed, touch panel shows degradation of its performance and durability even in a period of 1000000 cycles. The area which is guaranteed with sensitive area/line-(A) is guaranteed area) and the sensitive area/line-(B) is the area which is guaranteed by a boundary of the active corresponding to this area.
Opening prohibition area: opening because an external load is applied a transparent electrode and a surface damage is given to touch panel function by pressing. The area which does not substrate even if pressed.

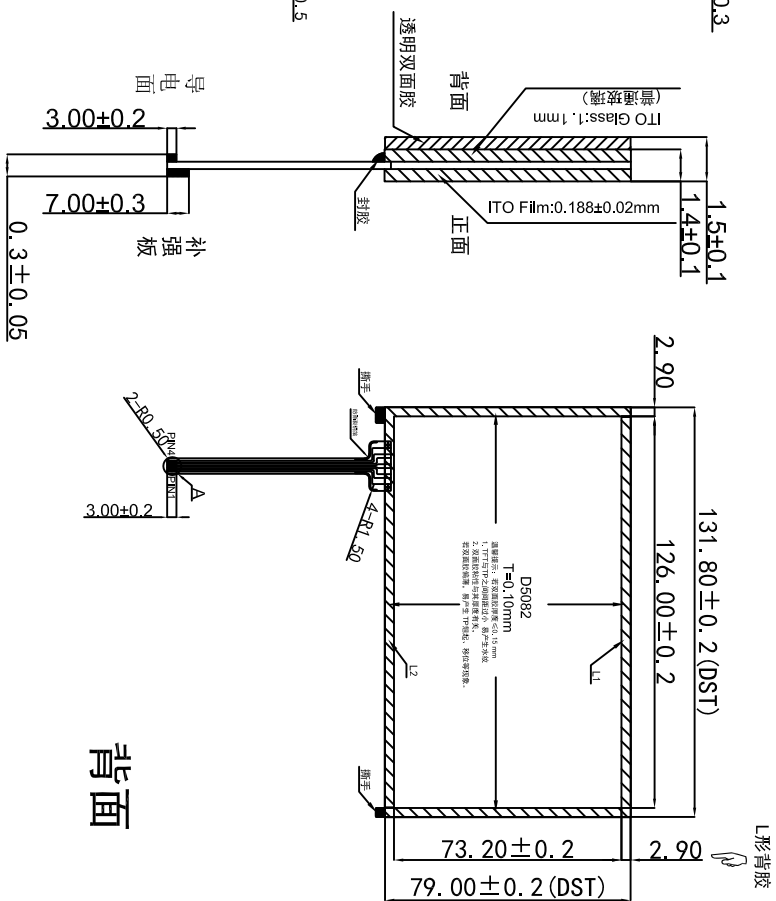
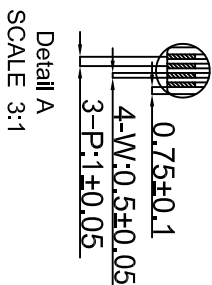
Pin NO:	Assi gnment
1	LEFT
2	BOTTOM
3	RIGHT
4	TOP

Notes:

1. Type: Film to Glass (雾面防牛单膜)
2. Operating Voltage: $\leq 7V$
3. operation Temperature: $20^{\circ}C \sim 70^{\circ}C$
Storage Temperature: $-30^{\circ}C \sim 80^{\circ}C$
4. Connect Material: FPC
5. Response Time: $\leq 10ms$
6. Linearity: $\leq 1.5\%$
7. Transmittance: $\geq 78\%$
8. Surface Hardness $\geq 3H$ (Pencil)
9. operation force: $\leq 160g$
10. Resistance:
(Anti-glare Hard & Mate anti-newton ring coating ITO Film)X: $200 \Omega \sim 1100 \Omega$
(Stand ard ITO Glass)Y: $100 \Omega \sim 700 \Omega$
11. Unspecified Tolerance: ± 0.20
12. All materials in the drawing coincide with the ROHS



正面



背面

MARK	HISTORY	DATE	NAME
$\triangle 1$			

客户签名	时间	A4	SCALE	Ver.1	绘图	彭雨	时间	2013.01.08
		mm	1:1		审图	胡应和	时间	2013.01.08